



BIENVENUE

Les **Ailes**
Québécoises



Les
Ailes
Québécoises



Les
Ailes
Québécoises





HISTORIQUE

Fondé en décembre 1998 par Marc Lachance

Au début le regroupement était d'environ 10 pilotes, donc certains sont présents depuis le tout début.

Pierre Doré en devient le président en 2004



ADMINISTRATION

Président:

Pierre Doré

Vice-président:

Jean St-Cyr

Directeur technique:

Bruno Gagnon

Collaborateurs:

Alain Caron

Denis Brown

Jean-Pierre Fillion

Jean Poirier



AÉROVIRTUEL QUÉBEC

Aérovirtuel Québec est une association virtuelle aérienne francophone basée à Québec. Elle regroupe des pilotes d'un peu partout au Québec et même d'ailleurs (Europe).

Nous comptons, environ 60 pilotes, donc une quinzaine ayant cumulés plus de 1000 heures de vol virtuel et certains sont ou ont déjà été pilotes réels.

Nous nous identifions plus à un aéroclub qu'à une compagnie aérienne virtuelle; en effet, nos pilotes peuvent voler l'avion de leur choix avec leurs conditions de vol et selon leurs disponibilités.



AÉROVIRTUEL QUÉBEC

En plus d'être actif sur notre réseau privé AVQ, une bonne proportion de nos membres expérimentés et bilingues volent sur le réseau VATSIM, sous l'indicatif (phonie) **AVGO**.

Nous organisons des soirées thématiques :

Vols ATC,

Missions de lutte aux incendies de forêt, recherche/sauvetage, missions humanitaires etc.)

Ainsi que des activités sociales (déjeuners mensuels, visites thématiques etc.).

MUSÉE AVIATION OTTAWA



LACHUTE 2007



RÉSERVATION D'HOTEL?



LOGICIEL UTILISÉ

Flight Simulator X de Microsoft.



TYPES DE VOL

- Aviation générale
- Aviation régionale (vols domestiques)
- Aviation de ligne (gros porteurs)
- Militaire (transport, escortes)
- Aviation classique
- Intervention multi rôles (feu de forêts, recherche sauvetage, surveillance)
- Acrobatique



AVIATION GÉNÉRALE

VOL VFR





AVIATION GÉNÉRALE

VOL VFR





AVIATION GÉNÉRALE

VOL VFR





AVIATION GÉNÉRALE

VOL VFR





AVIATION GÉNÉRALE

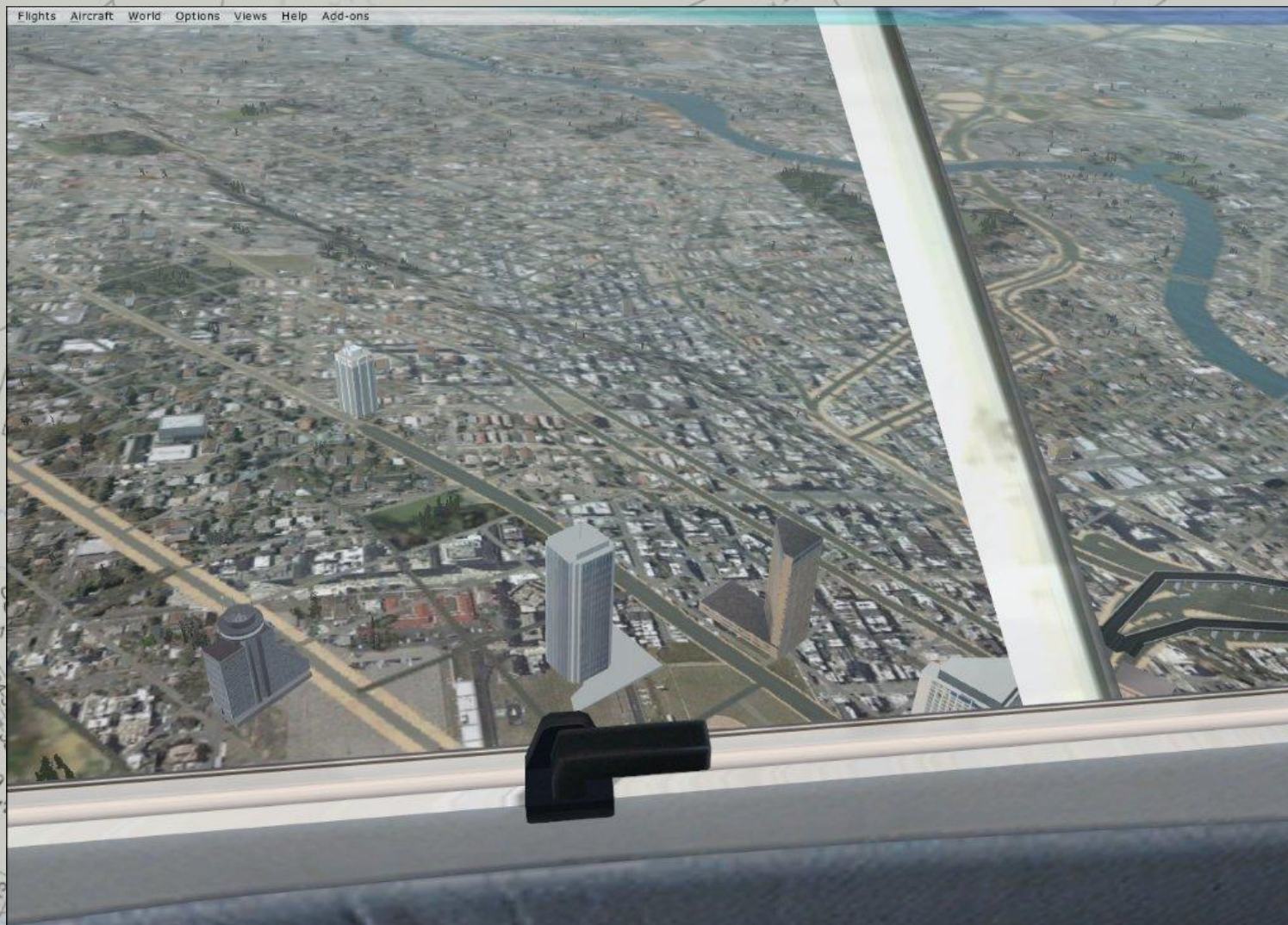
VOL VFR





AVIATION GÉNÉRALE

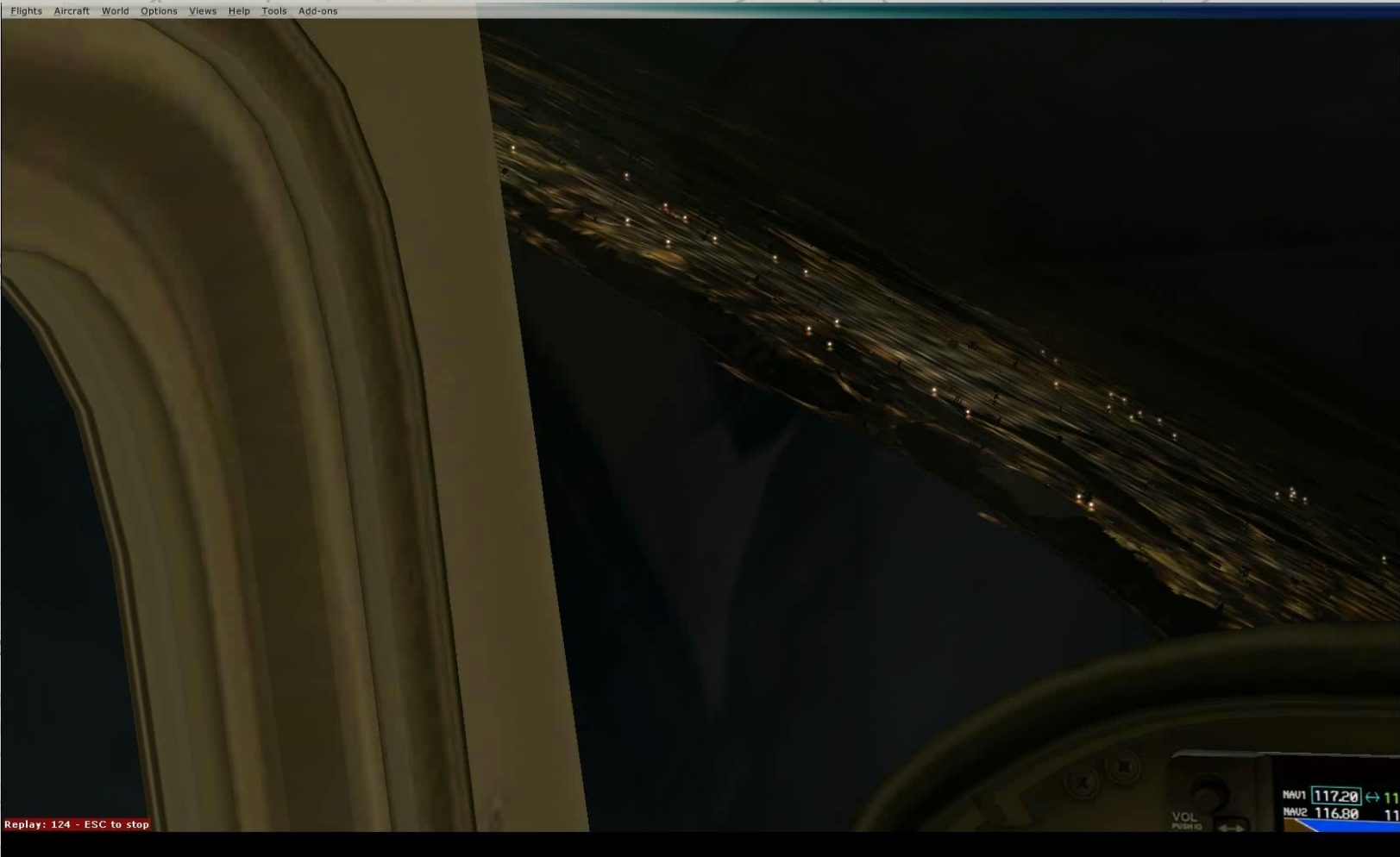
VOL VFR





AVIATION GÉNÉRALE

VOL VFR



Replay: 124 - ESC to stop



AVIATION GÉNÉRALE

VOL OTT





AVIATION GÉNÉRALE

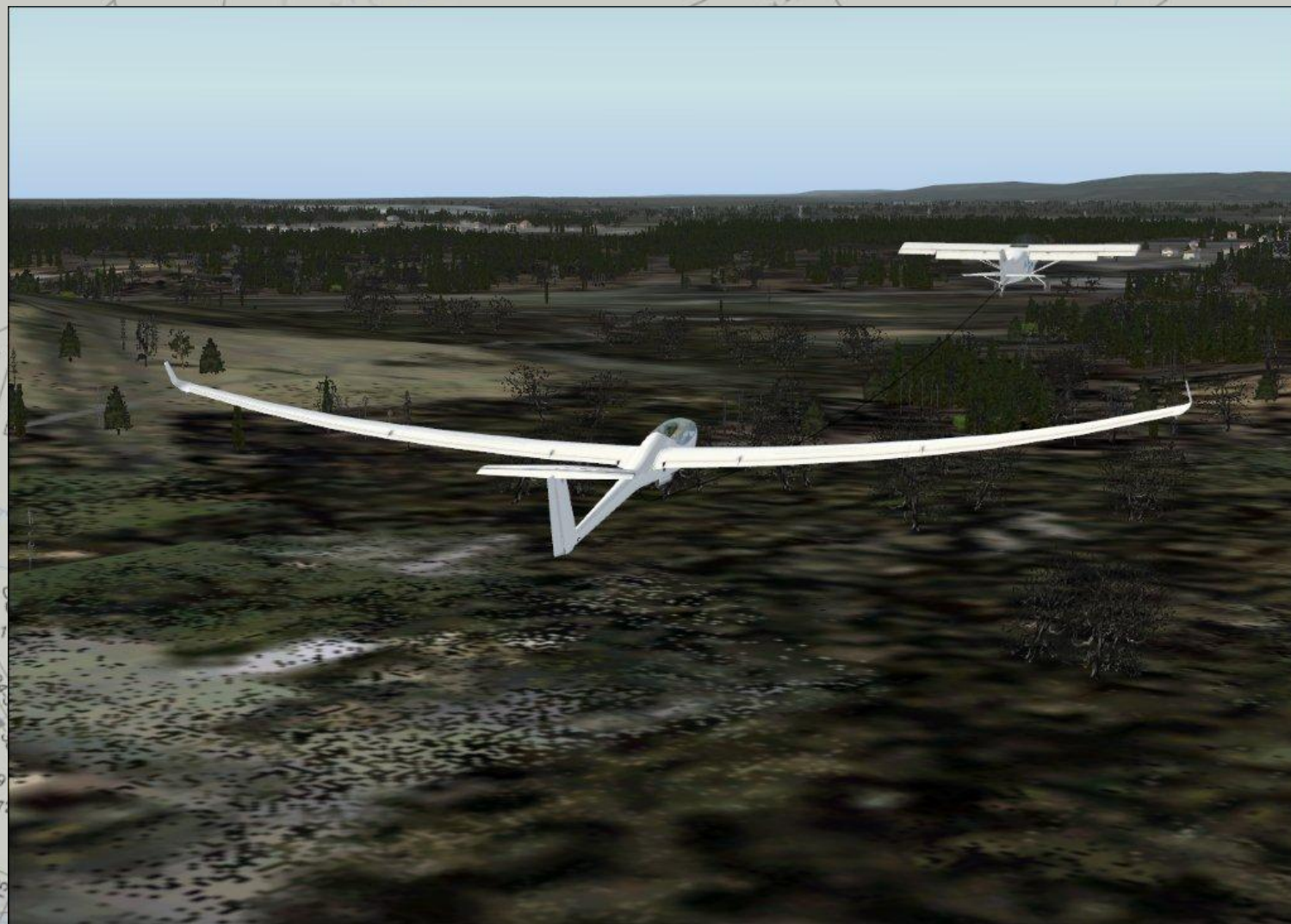
VOL OTT





AVIATION GÉNÉRALE

PLANEUR





AVIATION GÉNÉRALE

PLANEUR



AVIATION GÉNÉRALE

LA BROUSSE



AVIATION GÉNÉRALE

LA BROUSSE



AVIATION GÉNÉRALE

LA BROUSSE

LAT : N46° 41.43' LON : W73° 54.95' ALT : 1451 Ft MSL Mag 10 34 KIAS



AVIATION GÉNÉRALE

LA BROUSSE

LAT : N47° 46.99' LONG : W71° 0.14' ALT : 2973 Ft MSL Mag 79 0.0 KIAS



AVIATION GÉNÉRALE

LA BROUSSE





LA BROUSSE



AVIATION GÉNÉRALE

LA BROUSSE



AVIATION GÉNÉRALE

LA BROUSSE



AVIATION GÉNÉRALE

LA BROUSSE



AVIATION GÉNÉRALE

LA BROUSSE



AVIATION GÉNÉRALE

LA BROUSSE



AVIATION RÉGIONALE





AVIATION RÉGIONALE



AVIATION RÉGIONALE



AVIATION RÉGIONALE



AVIATION RÉGIONALE



AVIATION RÉGIONALE



AVIATION RÉGIONALE



AVIATION RÉGIONALE





AVIATION RÉGIONALE



AVIATION RÉGIONALE





AVIATION RÉGIONALE



AVIATION RÉGIONALE





AVIATION RÉGIONALE



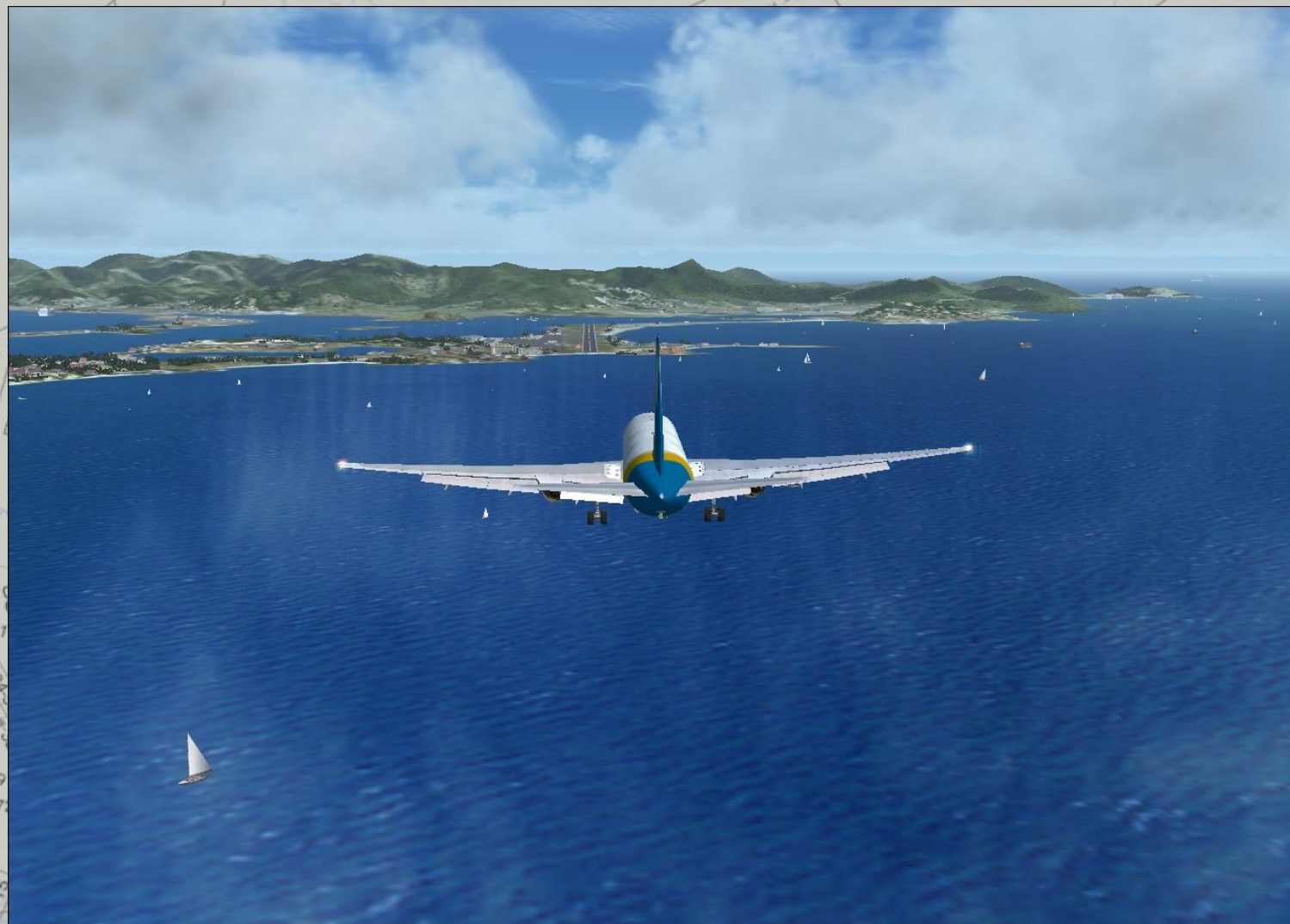


AVIATION DE LIGNE

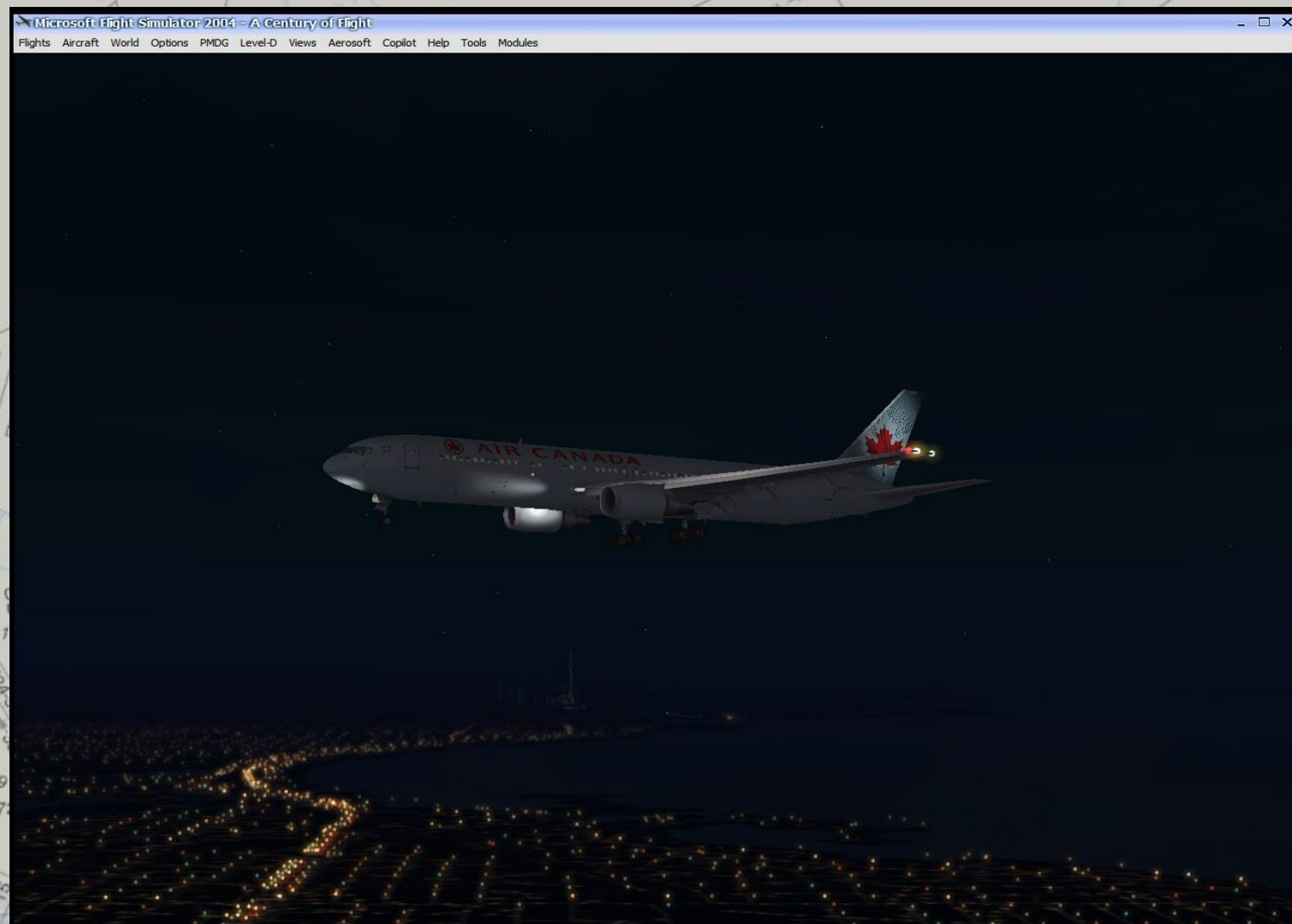




AVIATION DE LIGNE



AVIATION DE LIGNE



AVIATION DE LIGNE





AVIATION DE LIGNE



AVIATION DE LIGNE



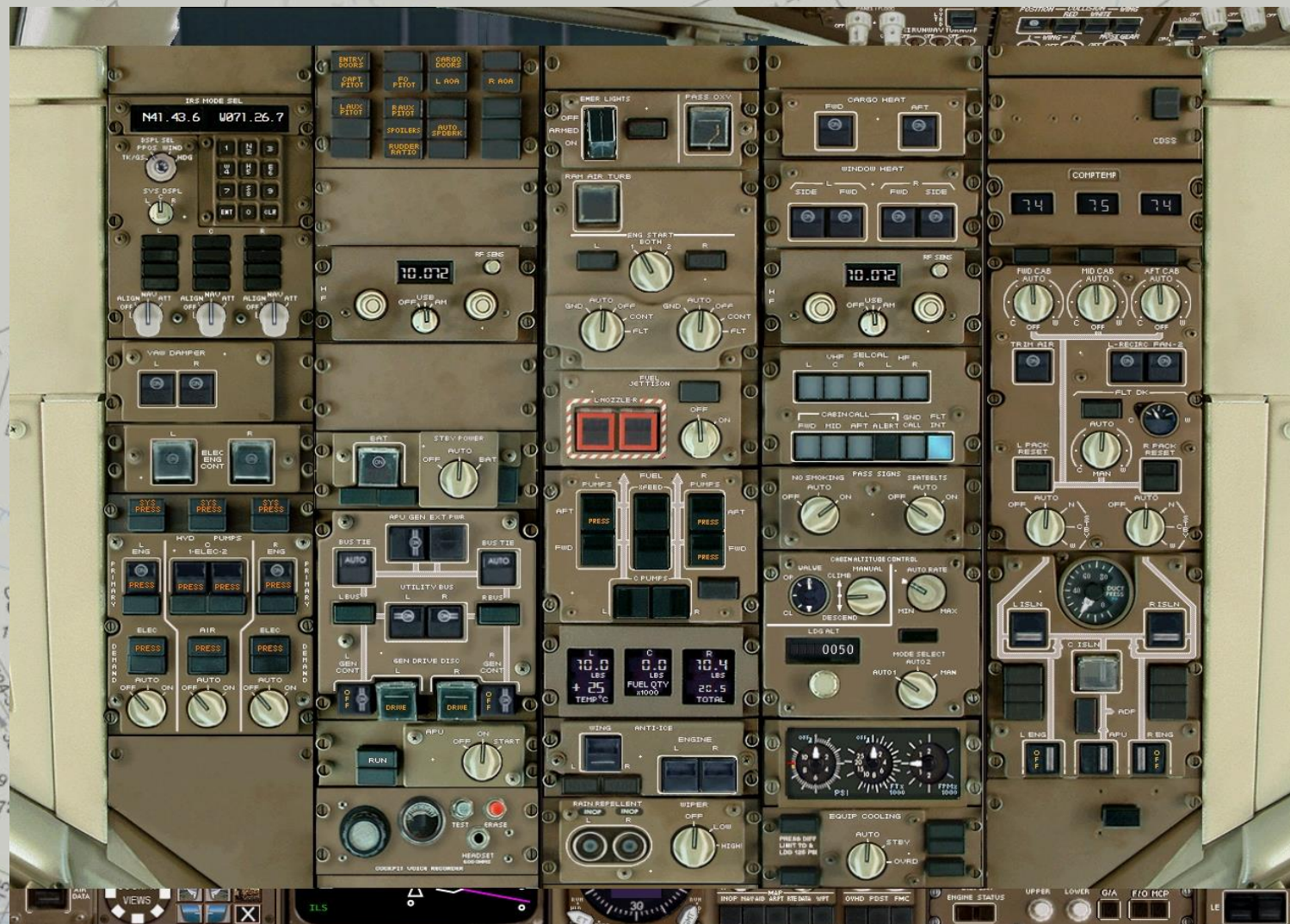
| ACT RTE 1 LEGS 1/5 | | |
|--------------------|------|------------------|
| 138° | 10NM | 312/FL214 |
| PESCA | 105° | 33NM .806/FL320 |
| WAGES | 117° | 117NM .806/FL370 |
| AVE | 105° | 77NM .806/FL370 |
| LANDO | 116° | 36NM .806/FL370 |
| PMD | | |

| < RTE 2 LEGS RTE DATA > | |
|-------------------------|-----------|
| INIT REF | RTE |
| FIX | LEGS |
| MENU | NAV RAD |
| PREV PAGE | NEXT PAGE |
| 1 | 2 |
| 3 | 4 |
| 5 | 6 |
| 7 | 8 |
| 9 | 0 |
| K | L |
| M | N |
| O | P |
| Q | R |
| S | T |
| U | V |
| W | X |
| Y | Z |
| DEL | CLR |

AVIATION DE LIGNE



AVIATION DE LIGNE







AVIATION MILITAIRE



AVIATION MILITAIRE



AVIATION MILITAIRE



AVIATION MILITAIRE



AVIATION CLASSIQUE



AVIATION CLASSIQUE



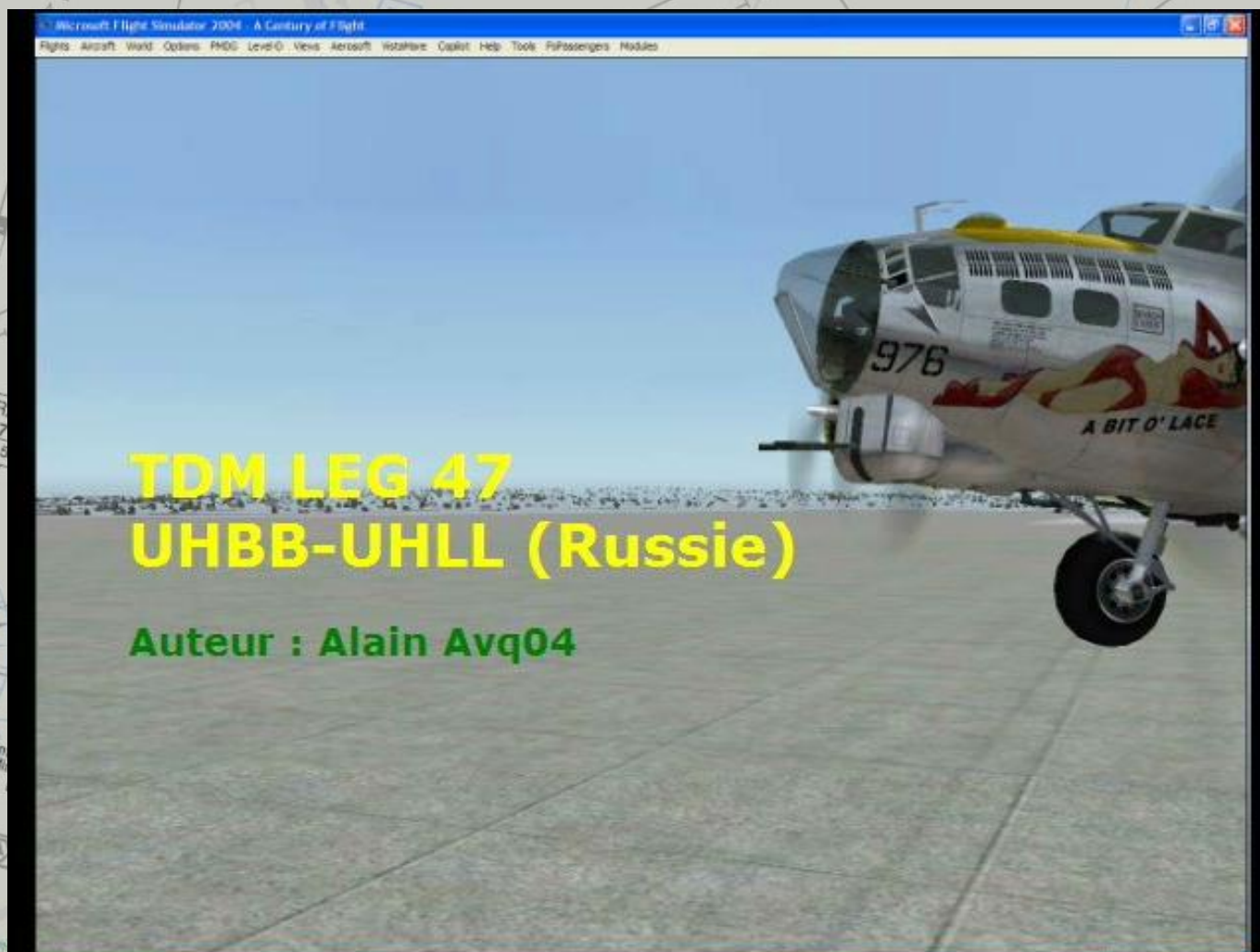
AVIATION CLASSIQUE



AVIATION CLASSIQUE



AVIATION CLASSIQUE





GROUPE INTERVENTION MULTI RÔLES



Une alliance formée d'une vingtaine de personnes, concepteurs et développeurs de tous les coins du Québec, leurs réalisations passées et présentes prends en quelque sorte la relève du regretté site des *Pilotes Virtuels du Québec*, qui nous a offert les plus belles scènes depuis FS98 jusqu'à FS9.

SCÈNES CYQB



SCÈNES CYQB



SCÈNES CYQB

Flights Aircraft World Options Views Help Tools Add-ons

LAT: N46° 44.84' (ON: W71° 20.51' ALT: 23.9 FT MSL Mag305 0.0 KIAS
FRAMES/SEC = 20.7 (TARGET OF 25FPS)



SLEW



SCÈNES CYQB





GROUPE INTERVENTION MULTI RÔLES



GROUPE INTERVENTION MULTI RÔLES



GROUPE INTERVENTION MULTI RÔLES



GROUPE INTERVENTION MULTI RÔLES

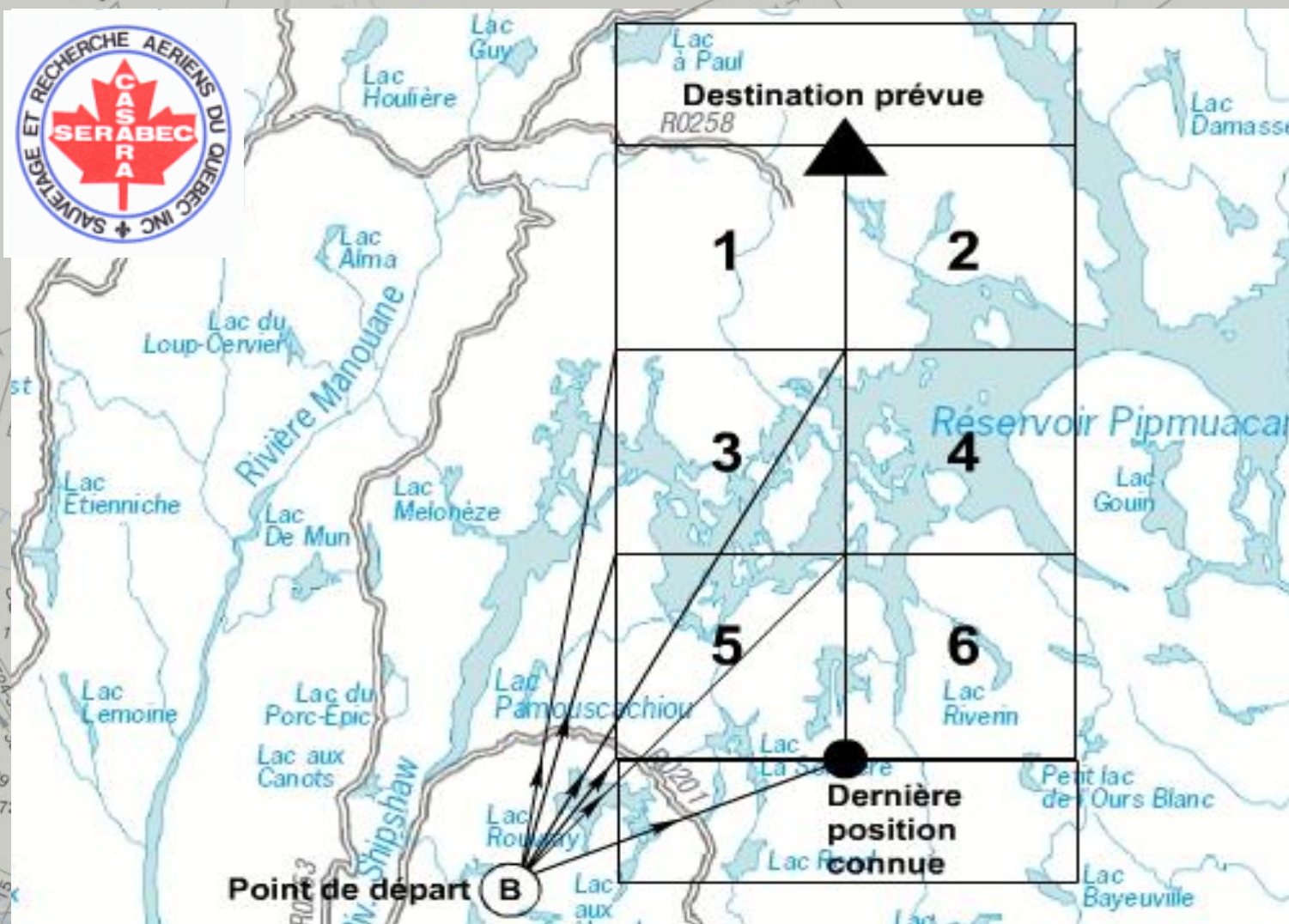




GROUPE INTERVENTION MULTI RÔLES



GROUPE INTERVENTION MULTI RÔLES





GROUPE INTERVENTION MULTI RÔLES





REDBULL AIR RACE





REDBULL AIR RACE

[Flights](#) [Aircraft](#) [World](#) [Options](#) [Views](#) [Help](#) [Tools](#) [Add-ons](#)

**LAT: N46° 49.69' LON: W71° 10.72' ALT: 48 FT MSL Mag 44 201 KIAS WIND 277 Mag @ 4 kts.
FRAMES/SEC = 14.1 (UNLIMITED) +1.1 Gs FUEL 90 %**

F5CRace

33.438 Lap: 1/1 0.070
In race... 33.300
9990.000s

Replay: 220 - ESC to stop

426.7 123.55
QUEBEC Ch 75
12.8 YQB
46 42.3 W71 37.6
230 QB
5 45.0 W71 27.8

REDBULL AIR RACE

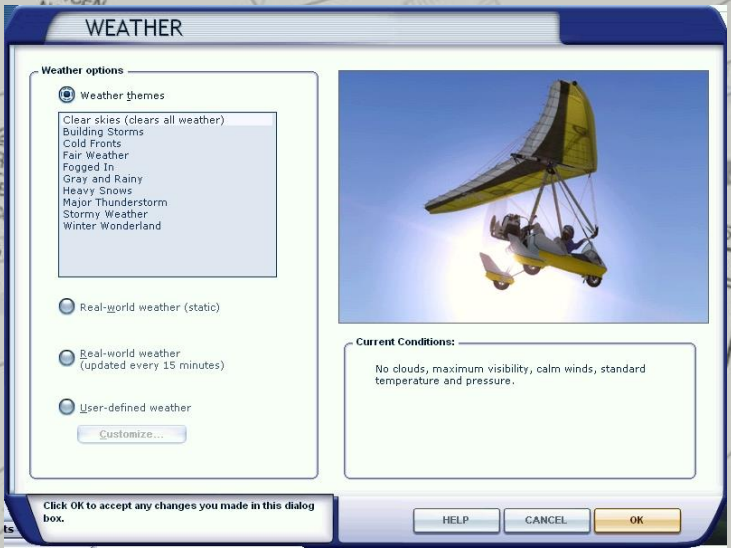


REDBULL AIR RACE





SANS CONNECTION INTERNET



CONTROLEURS—MANETTES-JOYSTICK

Flight Sim Yoke



Throttle Quadrant



Fightystick



CONTROLEURS—MANETTES-JOYSTICK

RP48

8 Programmable Pushbuttons -

4 Rotary Control Knobs

Each of the control knobs on the RP48 can be used to adjust instrument panel settings such as altimeter, gyro, OBS1 and OBS2, as well as many others.

GF-LGT Landing Gear and Trim

GoFlight GF-166 VRP (Versatile Radio Panel)

Simulation of radios in the sim cockpit

GF-MCP Advanced Autopilot

offers realistic simulation of a wide range of autopilot devices typically found in general aviation and commercial aircraft. Using the GF-MCP, it's simple to set the nav course, heading, speed, vertical speed, and altitude of your simulated aircraft.

GF-TQ6 Throttle Quadrant
Shown, setup for single engine prop.

Come with handles for:
4 jets thrust levers.
4 thrust reversers.
Dual engine prop.

GF-T8 T Toggle Switch/Indicator

8 programmable toggle switches and LED indicators. You choose the functions to assign using GoFlight's GF Config software, and label the switches using the MagL labels included with each unit.

The GF-P8 8 Pushbutton/Indicator has 8 programmable pushbuttons and LED indicators.



CONFIGURATION



CONFIGURATION



CONFIGURATION



CONFIGURATION



UTILITAIRES

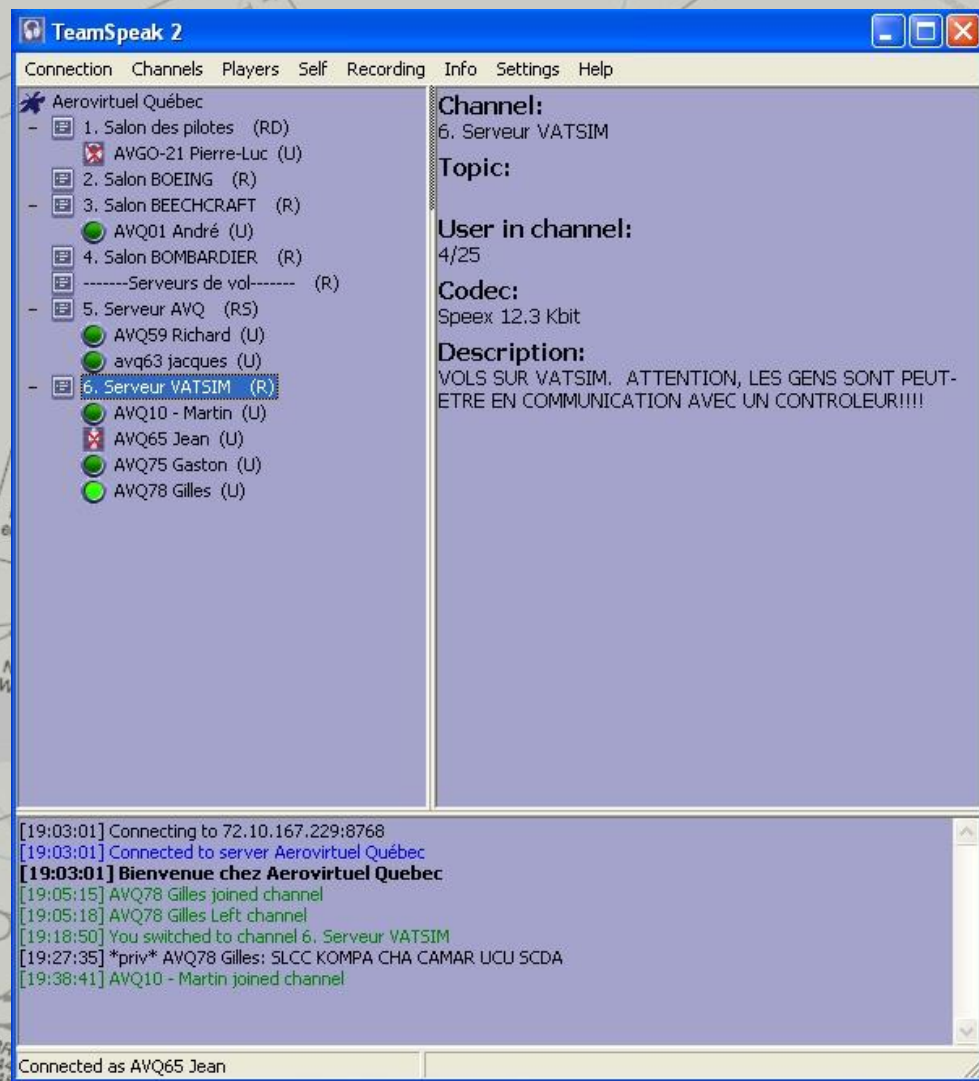
- Logiciels de communications.
- Logiciels réseau
- Logiciels de météo
- Logiciels de navigation
- Sites: FIR de Montréal, NAV CANADA,
- Sites WEB.



LOGICIEL DE COMMUNICATIONS



Un serveur Teamspeak privé, permet d'avoir un contact vocal entre membres, ce moyen de communication fort conviviale est aussi très utilisé pour les soirées thématiques et d'autres consacrées à l'apprentissage des pilotes mais aussi des contrôleurs.





LOGICIEL DE COMMUNICATIONS



LOGICIEL RÉSEAU

FSINN: Interface client de réseau.

**FSX MULTI
JOUEURS**



RÉSEAU:

**VATSIM
AVQ
FSFDT**

FSINN a été écrit pour correspondre au modèle que les pilotes virtuels ont toujours souhaité en apportant un nouveau souffle grâce aux interactions entre le simulateur et l'aspect multi-joueurs: affichage et déplacement des appareils environnants, fluidité des mouvements. Pour permettre à toutes les configurations de voler avec le même plaisir, tout est bien entendu paramétrable à loisir.



LOGICIEL RÉSEAU

FS COPILOT



Microsoft Flight Simulator - Un siècle d'aviation

Vols Appareil Environnement Options Vues Copilot Aide Modules

Inn MiniCP

Inn Control Panel

Inn Settings

Inn Flightplan

Inn Chat

Inn Weather

Inn ATC

Inn Plane

Inn QuickChat

Inn VATSIM Voice

Inn Radar

Inn Quit

Inn Quit

Settings

Transparency

Sound

About

LOGICIEL RÉSEAU

INN FLIGHT PLAN
X

Stored FP:
▼

New
Delete
Load
Save

Pilot information
 Name: Jean St-Cyr, CYQB
 Callsign: AVQ65

Aircraft
T/A320/F

Persons on Board
118

Flight Route

Departure
CYQB

Destination
CYUL

CYQB 6.YQB V98 J578 OMBRE V352 MAIRE.MAIRE 1

Alternate Airports: CYHU

Cruising Alt.: FL240 True Airspeed: 110

Remarks: Premier vol sur vatsim

| | |
|--------------------------|------|
| Departure Time Estimated | 0000 |
| Departure Time Actual | 0000 |
| Estimated Time Enroute | 0000 |
| Fuel on board | 0000 |

Zulu Time
(GMT)

Request from Tower
Send to tower

LOGICIEL RÉSEAU



The screenshot displays the Microsoft Flight Simulator X interface with a cockpit view. Several windows are open, showing network-related information:

- Chat:** Displays a list of active users and chat messages. The messages include:
 - SEAZ_CTR: ATU10, rpr. rkyr your clrc
 - ATU10: rpr
 - SEAZ_CTR: ATU10, clrd to SPTU as filed, maintaining visual conditions, sqk 6310, read back
 - SEAZ_CTR: ATU10, readback correct, clrd to st up. no weather info available for SW7, try in use at pilots discretion, call as airborne
 - SEAZ_CTR: AFPA01, affirm, voice!
 - SEAZ_CTR: AFPA01, sqk code 6314, ident
 - SEAZ_CTR: ATU10, sqk normal 631, pls
 - SEAZ_CTR: ATU10, rde mnc, climb to P1090 proceeding as filed, rde surveillance. Report reaching P1090
 - SEAZ_CTR: AFPA01, do you read me?
 - SEAZ_CTR: AFPA01, sqk code 6314, ident
- WP Plane:** Shows a list of waypoints and their details:
 - AVQ76: B300 ZZZ Beech King 4.25.
 - AVQ75: C307 AVQ FSD Centre Plan.
 - AVA976: B763 AVA
- Weather:** Displays weather information for the current location:
 - SP: No available weather...
 - OS: SPTU 212300Z ///WKT CAVOK 3121 Q1006 RPK
 - AL: No available weather...
 - Enter ICAO code to get weather
- ATC:** Shows a list of ATC messages:
 - SEAZ_CTR: CTR 133.700 AKAH
 - SPM_CTR: CTR 128.800 Vienne (88Hz)
- Control Panel:** Displays a list of control panel settings, including:
 - SEAZ_CTR: CTR 133.700 AKAH
 - SPM_CTR: CTR 128.800 Vienne (88Hz)

The main cockpit view shows the instrument panel with various gauges, including the altimeter (2500 ft), airspeed indicator (200 knots), and heading indicator (100 degrees). The background shows a landscape with mountains and a river.



LOGICIEL RÉSEAU



Virtual Air Traffic Simulation Network

677 Pilots Online
172 ATC Online
7 Servers Online
139977 Registered Users
10336598 Hours Flown
1784207 ATC Hours

NETWORK

WHO'S ONLINE VISUAL DISPLAY
STATISTICS RESOURCES

NEW PILOTS START HERE

NEW ATC START HERE

Legacy Text Navigation

Home/NOTAMS
Forums
Pilot Training
Gallery

Member Services

Community

Pilot Resources



Click here to Submit News/NOTAM



Virtual Air Traffic Simulation Network

Larnaca Fly-in: Oct 28th

Posted Friday, October 26, 2007 19:12 EST



On the 28th of October the staff and members of the Cypriot Area Control Center invite all pilots to take part in a long awaited fly-in to Larnaca International Airport. (LCLK).

Larnaca Airport can handle aircraft as heavy as the 747-300

and also attracts general aviation traffic. So bring your wings over to sunny Cyprus and enjoy 12 whole hours of top quality ATC for both en-route traffic and departures and arrivals from Larnaca. An event not to be missed!

For more information email Jason Georgiades at jasoncontrol@atgmail.com
Charts are available at www.avsim.com/hangar/flight/cvartcc/

BrisVegas RealOps: Oct 27th

Posted Tuesday, October 23, 2007 21:00 EST



Fly Online with
VATSIM.net
7 Regions Worldwide
Encompassing 18
Divisions

Africa & Middle East Region

Asia Region

Europe Region

Central America, Mexico,
Caribbean Region

North America Region

Oceania Region

South America Region

VATSIM est une organisation internationale, il n'est pas rare de trouver des pilotes étrangers évoluer en Amérique et vice versa.

Doté régulièrement d'une couverture ATC importante sur les grands aéroports du monde.

Une équipe de contrôleurs virtuels (dont certains sont de vrais contrôleurs civiles ou militaires) sont prêts à accueillir les pilotes évoluant dans le monde virtuel.



LOGICIEL RÉSEAU





LOGICIEL RÉSEAU

ServInfo 2.02
File Options Tools Help

VATSIM IVAO

Countries: [Flags of Canada, Denmark, USA, Australia, Japan]
FIRs/ARTCCs: CZUL CZUL CZUL CZYZ CZWG ENOS KZNY CZUL YBBB RJTG
Airports: CYQB CYUL CYOW CYYZ CYWG ENGM KJFK CYUL YSSY RJAA

Current display: **ATC coverage overview**
Country: Canada FIR/ARTCC: Montreal CZUL Airport: CYQB Quebec CYQB

ATC Overview | All Controllers | All Pilots | Country Details | FIR/ARTCC Details | Airport Details | Selected Details [0] | Network Servers | Voice Servers | Map

Expansion Level
Countries
Countries + FIRs
Countries + FIRs + Airports


Legend:
Ground or clearance delivery position manned
Tower position manned
Approach or departure position manned
Center position manned
UIR position manned (Eurocontrol sectors)
Center NOT manned

Click on the + or - to expand or to collapse individual nodes
Click on a country, FIR or airport to display the details page
Hold down the shift key while clicking to focus on the region at the map display

Argentina
SAEF Ezeiza FIR
Austria
LOWW Wien FIR
Belgium
EBBU Brussel FIR
Brazil
SBBS Brasilia FIR
SBCW Curitiba FIR
Canada
CZVR Vancouver FIR
CZYX Toronto FIR
Costa Rica
MHTG Central America FIR
Cyprus
LCCC Nicosia FIR
Dominican Republic
MDCS Santo Domingo FIR
Egypt
HECC Cairo FIR
Estonia
EETT Tallinn FIR
France
LFFF Paris FIR
Germany
EDFF Frankfurt FIR
EDLL Duesseldorf FIR
EDMM Munich FIR
EDWW Bremen FIR
Hungary
LHCC Budapest FIR
Ireland
EISN Shannon FIR
Israel
LLTA
Netherlands
EHAA Amsterdam FIR
Poland
EPWW Warszawa FIR
Puerto Rico
TJZS SAN Juan Oceanic FIR
Russia
ULLL Sankt-Peterburg FIR
URRV Rostov FIR
USSS Yekaterinburg FIR

VATSIM data last updated at 27/10/2007 14:28
ATC services provided in 28 countries (49 FIRs)

LOGICIEL RÉSEAU

ServInfo 2.02
 File Options Tools Help
 Countries: 
 FIRs/ARTCCs: CZUL CZUL CZUL CZYZ CZWG ENOS KZNY CZUL YBBB RJTG
 Airports: CYQB CYUL CYOW CYYZ CYYG ENGM KJFK CYUL YSSY RJAA
 Current display: **All pilots**
 Country: Canada FIR/ARTCC: Montreal CZUL Airport: CYQB Quebec CYQB

ATC Overview All Controllers All Pilots Country Details FIR/ARTCC Details Airport Details Selected Details [0] Network Servers Voice Servers Map

Flights

| Callsign | Name | Departure Airport | Destination Airport |
|----------|-----------------------------------|--------------------------------------|--------------------------------------|
| ASA0419 | Morgan Lusk - KPDJ | EGKK London-Gatwick, United Kingdom | EHAM Amsterdam, Netherlands |
| ASA4431 | Weston Woodward KLEX | PHNL Honolulu Intl HI, USA | KSEA Seattle-Tacoma Intl WA, USA |
| ATL8135 | Cleber Bacarissa (SBGR) | SBGR Guarulhos, Brazil | SBPS, Brazil |
| AUA212 | Carlos Brás LPPT | LPPT Lisbon, Portugal | LEMD Madrid-Barajas, Spain |
| AUA51 | Patrick Hrusa LOWW | LOWW Vienna, Austria | RJAA Tokyo-Narita, Japan |
| AVA2033 | marco antonio sanchez SKBO | SKBO Bogota-Eldorado, Colombia | KMIA Miami Intl FL, USA |
| AVA3462 | CRISTIAN VELASQUEZ CELIS SKBO | SKBO Bogota-Eldorado, Colombia | KMIA Miami Intl FL, USA |
| AVA749 | Daniel Blanco SKCC | SKBO Bogota-Eldorado, Colombia | SKCL Cali, Colombia |
| AVA8550 | PEDRO DANIEL FERNANDEZ AVILA SKBO | SKBO Bogota-Eldorado, Colombia | SKCL Cali, Colombia |
| AVQ01 | André Roy | CYQB Quebec, Canada | KBOS Boston Logan Intl MA, USA |
| AVQ03 | Denis Dupuis CYQB | CYGP Gaspé, Canada | CYQB Quebec, Canada |
| AVQ78 | Gilles Boily CYQB | CYQB Quebec, Canada | KBOS Boston Logan Intl MA, USA |
| AZA1264 | Stefano Ragni - LIBP | LIBP Pescara, Italy | LIRF Roma-Fiumicino, Italy |
| AZA384 | STEVEN LETOI | LIML Milano-Linate, Italy | KLAX Los Angeles Intl CA, USA |
| AZA797 | ALEXEY EFREMENTKO UO00 | LIMF Torino, Italy | RJSF Fukushima, Japan |
| AZT017 | Artur Sliwa EPWA | EPWA Warszawa-Okęcie, Poland | LTBJ Izmir-Adnan Menderes, Turkey |
| BA-120 | Bryan Ferrell KSEA | EHAM Amsterdam, Netherlands | EDDF Frankfurt, Germany |
| BA1503 | MARK JORDAN EGCC | EGCC Manchester, United Kingdom | KJFK New York Kennedy Intl NY, USA |
| BAA0909 | Erdogan Kavak LTBA | LTAC Ankara-Esenboga, Turkey | LTBA Istanbul-Ataturk, Turkey |
| BAL678 | Edwin Bejarano SKCL | KLGA New York La Guardia NY, USA | CYYZ Toronto-Pearson, Canada |
| BAW-2 | Tim Morthead - EGLL | LEBL Barcelona-El Prat, Spain | EGLL London-Heathrow, United Kingdom |
| BAW003 | Chris Beck EGLL | EGLL London-Heathrow, United Kingdom | KJFK New York Kennedy Intl NY, USA |
| BAW035 | Keith Mann EGLL | EGLL London-Heathrow, United Kingdom | EPWA Warszawa-Okęcie, Poland |
| BAW093 | Basil Andronis LGBL | EGLL London-Heathrow, United Kingdom | CYYZ Toronto-Pearson, Canada |

No Flight Plans Filed

| Callsign | Name | Airport | Country |
|----------|---------------------------|-------------------------------|-----------|
| 4X-0FC | Ofir Cohen LLBG | LLBG Ben-Gurion | Israel |
| A30001 | Dennis Stanek-KBLV | KLTS Altus Alb Ok, OK | USA |
| AA2173 | Stefan Jacome KJFK | KMIA Miami Intl FL | USA |
| AAL375 | CARLOS GONZALEZ KJFK | KJFK New York Kennedy Intl NY | USA |
| AAL400 | DARREN ESANNASON KLAX | KORD Chicago-O'Hare Intl IL | USA |
| AAL700 | Ezequiel Elias KMIA | KMIA Miami Intl FL | USA |
| ACD561 | Jonathan Vanderbanck CYUL | CYYZ Toronto-Pearson | Canada |
| AFA2793 | Lucas Stern KATL | KDCA Washington National VA | USA |
| AFL342 | andrey blednykh UWwWw | | |
| AIR1013 | RUSTEM GALIMOV UUEE | LJLJ Ljubljana-Briuk | Slovenia |
| ALG | LFEQ | | |
| AR2111 | Juan Pablo Rubio - SAAR | SAAR Rosario | Argentina |
| ARG1685 | Gonzalo Olivera SAZN | | |
| AU2640 | ROBERT VERA SAWO | SABE Aeroparque | Argentina |
| AVA049 | Roddy Figan KMCO | KHHR Hawthorne Muni CA | USA |

Flight Details for BAW003

Captain: Chris Beck Time Logged: 22 min

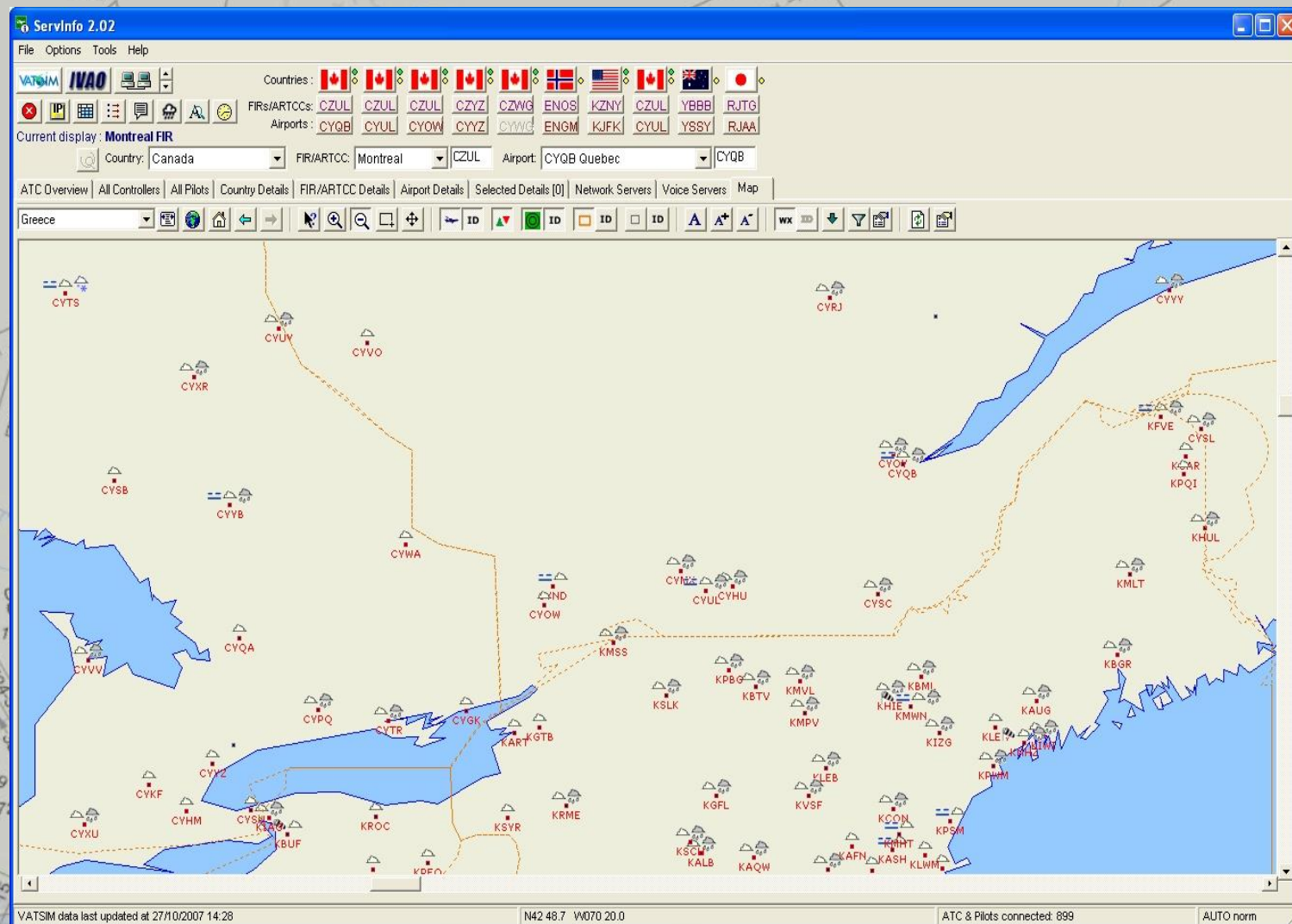
Aircraft Details
CONC/F 4 J H III 5000 5000
 Aerospatiale/British Aerospace: Concorde
 BRITISH AIRWAYS British Airways [Speedbird]

Flight Plan Details
 Route: CPT SL2 MERLY SL2 LESLU SL2
 5041N01500W/M200F450F460 TRAKS_M 4750N
 4653N 4460N 4265N 4267N SM2A
 Flight Level / Altitude: **580**
 Cruising Speed (TAS): **1093**
 Pilot's Remarks:
 SEL/BHFJ REG/G-80AG OPR/BAW RMK/TCAS
 RMK/LAHSO NOT AUTHORISED N7

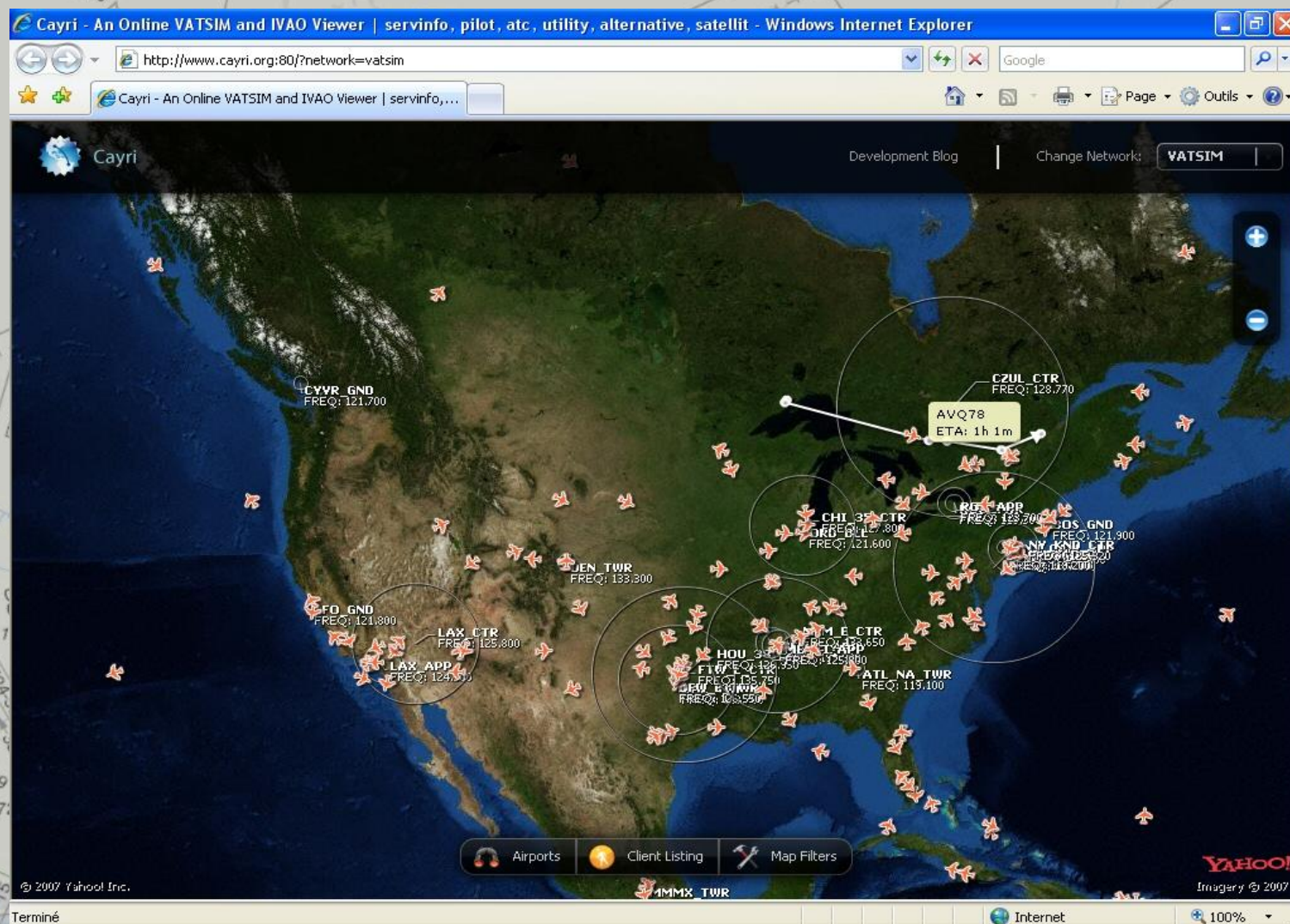
Actual Flight Details
 Flight Status: **Airborne**
 EGLL KJFK
 Currently in: London FIR (EGTT)
 Closest airport (within 100 nm): EGDK
 Kemble Royal AFB, United Kingdom (10 nm)
 Distance from Origin (nm): **68**
 Distance from Destination (nm): **2923**
 Estimated time to reach destination...
 Based on current speed: **6h 30'**
 Based on FP speed: **2h 40'**
 Altitude: **16128** Ground Speed: **450**
 Squawk Code: **2200**
 Connected to UK-1 server PID: 948648

VATSIM data last updated at 27/10/2007 14:28
 716 pilots / 631 flight plans filed worldwide
 ATC & Pilots connected: 899
 AUTO norm


LOGICIEL RÉSEAU







LOGICIEL RÉSEAU



LOGICIEL RÉSEAU



VATSIM in a nutshell:

- Events**
 - 04:15 Air International VA -
 - 18:30 1 Year Main Event
 - 12:00 CONTROLLER
 - 15:00 PRACTICAL EXAM AT LEBL
 - 13:00 Amsterdam -
 - 17:00 Frankfurt Connection
 - 14:00 Warsaw nights
 - 16:00
 - 14:00 Saturday Night Live
 - 18:00
 - 08:00 LARNAKA OFFICIAL
- My friends online**
 - AVQ01
 - CR2 André Roy
 - AVQ78
 - CR2 Gilles Boily CYQB
- My bookings today**

No bookings.

Online ATCs: 179 Pilots: 712


Overview | Events calendar | Communities | Configuration

18:36 UTC

Thomson Virtual's Viaggio Italiano

Posted by Mark Thornton on 2007-10-19

Edinburgh (EGPH) - Naples (LIRN) Sunday 28th October 1400Z-2330Z



Thomson Virtual will be departing Edinburgh this time destined for Naples (Napoli), Italy.

Departures are starting at 1400Z on Sunday 28th October and there are also several pilots booked for the return leg starting at 1800Z. The last 3 months events have proved to be extremely successful so lets hope this run continues!

Edinburgh Charts: www.ais.org.uk/aes/pubs/aip/html/eqph.htm

Naples Charts: www.vatita.net/?dir=download&pagina=planning/charts

Full details about the event and a competition that's being held can be seen on the Thomson Virtual website.

Please note, UK clocks go back 1 hour at 0100Z 28/10/2007. So, 14:00Z = 14:00 BST


Recent topics:


- [LARNAKA OFFICIAL EVENT LCLK \(2007-10-28\)](#)
- [Central African Overload \(2007-11-03\)](#)
- [CSAv Group flight \(2007-10-28\)](#)





LOGICIEL RÉSEAU

vroute

 info

 onLine

 route

 book

North America

Canada (39)

- CEG Edmonton (3)
- CZQM Moncton (2)
- CZQX Gander (5)
- CZUL Montreal (4)
- CZVR Vancouver (6)
- CZWG Winnipeg (1)
- CYYZ Toronto (18)

Mexico (5)

- MMFO Mazatlan Oceanic (1)
- MMFR Mexico (4)

USA (174)

- KZAB Albuquerque (9)
- KZAK Oakland Oceanic (7)
- KZAU Chicago (5)
- KZBW Boston (13)
- KZDC Washington (11)
- KZDV Denver (4)
- KZFW Fort Worth (5)
- KZHU Houston (7)
- KZID Indianapolis (4)
- KZJX Jacksonville (8)
- KZKC Kansas City (10)
- KZLA Los Angeles (15)
- KZLC Salt Lake (5)
- KZMA Miami (12)
- KZME Memphis (2)
- KZMP Minneapolis (3)
- KZNY New York (14)
- KZOA Oakland (12)
- KZOB Cleveland (4)
- KZSE Seattle (11)
- KZTL Atlanta (10)
- PAZA Anchorage (1)
- PHZH Honolulu (2)

Who's online

FIR map


Country map

Region


All Pilots

All Controllers

18:37 UTC


Canada

Remove from favourites


 ICAO filter: CA

Air Traffic Control

| callsign | freq. | name | rating | facility | from | until |
|------------|--------|-------------------|--------|--------------------------------|-------|-------|
| CYVR_TWR | 118.70 | Colin Bennett | STU | Vancouver Intl Tower | 14:21 | unk |
| CYYZ_APP | 132.80 | Dan MacLam | STU+ | Lester B Pearson Intl Approach | 14:12 | unk |
| CYYZ_DEL | 121.30 | Stefano D'Addario | STU | Lester B Pearson Intl Delivery | 12:27 | unk |
| CYYZ_N_GND | 121.65 | Jody Turner | STU | Lester B Pearson Intl Ground | 13:41 | unk |
| CYYZ_S_GND | 121.90 | Richard Dobbs | STU | Lester B Pearson Intl Ground | 13:38 | unk |
| CYYZ_TWR | 118.70 | Adam Bryson | STU+ | Lester B Pearson Intl Tower | 14:03 | unk |
| CZVR_CTR | 133.70 | Brad Crockett | CTR | Vancouver Center | 14:27 | unk |
| CZYZ_CTR | 125.77 | Steven Black | INS+ | Toronto Center | 14:25 | unk |
| CYVR ATIS | 124.75 | Colin Bennett | STU | Vancouver Intl ATIS | 14:22 | unk |

Present flights

| status | callsign | name | dep. | arr. |
|--------|----------|----------------------|------|------|
| CRZ | ACA25 | Shaun Hazen | CYVR | CYYC |
| CRZ | ACA415 | Victor Sussman | CYUL | CYYZ |
| CRZ | ACA856 | Robert Hall | CYQA | CYYZ |
| CRZ | ACD561 | Jonathan Vanderbanck | CYUL | CYYZ |
| CRZ | ATN816 | Len Modeen | KBDL | CYQB |
| CRZ | AVQ03 | Denis Dupuis | CYGP | CYQB |
| CRZ | BAW093 | Basil Andronis | EGLL | CYYZ |
| CRZ | BMI160 | André Pacheco | KJFK | EGLL |
| CRZ | C-GMAR | Ray Schmor | | |
| CRZ | COA412 | Trent DALTON | IAH | KCLE |
| CRZ | COA9181 | Andrew Happer | KGRF | PAJN |
| CRZ | CTG913 | Ron Pecora | CYTR | CYYZ |
| CRZ | CVC127 | Shane Schwendemann | CSE4 | CYYZ |
| CRZ | DLH777 | Daniel Lavallée | | |

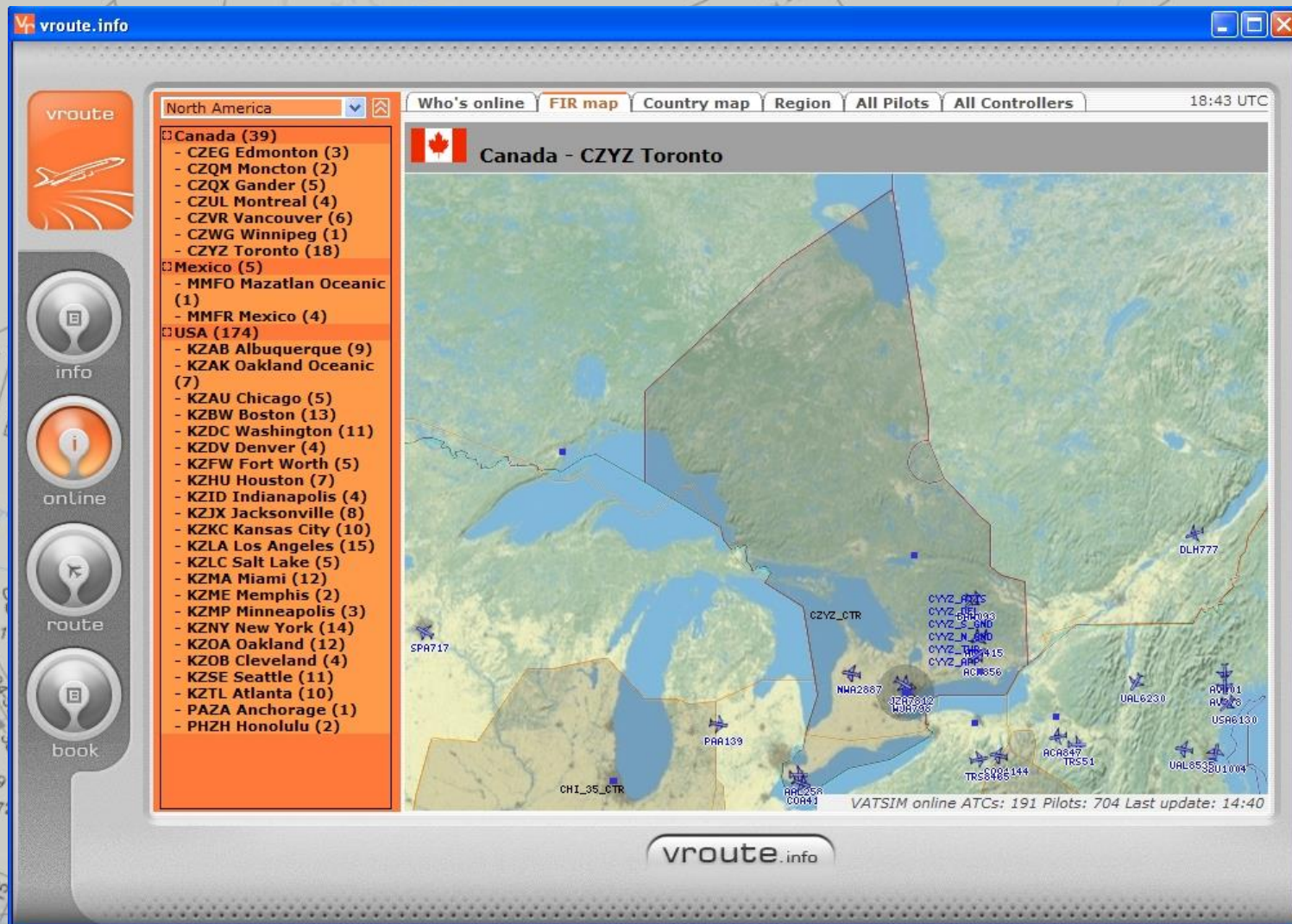
Future flights (booked, arrivals and transit)

| status | callsign | name | dep. | arr. | from | until |
|--------|----------|---------------------|------|------|-------|-------|
| BOOKED | DLH492 | Jens Roedel | EDDF | CYYR | 12:28 | 17:42 |
| CRZ | N527MA | Tom McDonald | CTIW | CZBB | 14:39 | 14:59 |
| CLB | PAY6338 | JoyAnn Turner | KSEA | CYXE | 14:41 | 16:06 |
| CLB | BAW2 | neal price | KJFK | EGLL | 14:43 | 15:58 |
| CLB | BAW7 | Michael Wells | EGLL | KJFK | 14:51 | 16:11 |
| CRZ | COA4144 | Robbie Goldberg | KEWR | CYYZ | 14:57 | 15:02 |
| CRZ | PAA139 | Chris Claridge | KMSP | KJFK | 14:58 | 15:08 |
| BOOKED | LAN715 | Armando Justo | LEMD | KJFK | 15:01 | 15:21 |
| CLB | WWA277 | Bruce Spurlock | PANC | KCVG | 15:03 | >>> |
| CRZ | ACA847 | Rainer Brinkschulte | EDDM | CYYZ | 15:05 | 15:15 |

VATSIM online ATCs: 183 Pilots: 709 Last update: 14:36

vroute.info

LOGICIEL RÉSEAU



vroute.info

Who's online | **FIR map** | Country map | Region | All Pilots | All Controllers | 18:43 UTC

North America

- Canada (39)**
 - CZEG Edmonton (3)
 - CZQM Moncton (2)
 - CZQX Gander (5)
 - CZUL Montreal (4)
 - CZVR Vancouver (6)
 - CZWG Winnipeg (1)
 - CZYZ Toronto (18)
- Mexico (5)**
 - MMFO Mazatlan Oceanic (1)
 - MMFR Mexico (4)
- USA (174)**
 - KZAB Albuquerque (9)
 - KZAK Oakland Oceanic (7)
 - KZAU Chicago (5)
 - KZBW Boston (13)
 - KZDC Washington (11)
 - KZDV Denver (4)
 - KZFW Fort Worth (5)
 - KZHU Houston (7)
 - KZID Indianapolis (4)
 - KZJX Jacksonville (8)
 - KZKC Kansas City (10)
 - KZLA Los Angeles (15)
 - KZLC Salt Lake (5)
 - KZMA Miami (12)
 - KZME Memphis (2)
 - KZMP Minneapolis (3)
 - KZNY New York (14)
 - KZOA Oakland (12)
 - KZOB Cleveland (4)
 - KZSE Seattle (11)
 - KZTL Atlanta (10)
 - PAZA Anchorage (1)
 - PHZH Honolulu (2)

Canada - CZYZ Toronto

VATSIM online ATCs: 191 Pilots: 704 Last update: 14:40

vroute.info

Navigation Buttons:

- vrout
- info
- online
- route
- book

LOGICIEL MÉTÉO


Active Sky X

for Microsoft's Flight Simulator X





Build 1056

Main Screen

Report

Map

Briefing

Wx Config

Settings

Save File

Open File

Download

Refresh Wx

Help

Active Date and Time

2007-10-28

23:17 GMT

☒ GMT
 ☐ Local

Set to Historical

2007-10-28

23:17

Apply

☒ Force to Real Time

<http://www.hifisim.com/ASXUserHome/>

Welcome to Active Sky X!

Successful connection to HiFi DataNet X Servers is verified!

This start page displays when you open Active Sky X. Here you'll find resources, tips, important news and other helpful information pertaining to your "ASX" experience. Use the scroll bar to the right to scroll up and down. Welcome aboard!

Recent News:

08/10/07 - Service Pack 1 Released!
SP1 is now official and available for download from our [Support Page](#)! SP1 brings many fixes and enhancements, and is a recommended upgrade for all ASX users. SP1 (B1083) should be installed on top of your existing ASX installation (please CLOSE ASX before running the update's setup.exe program).

05/29/07 - ASX Has Been Released!!!
After many months of hard work, the HiFi Development and Beta Teams have done a tremendous job getting things ready for release! Thanks go out to everyone! We hope you enjoy your new weather experience!

Common Tasks

- View Weather Information
- Specify your flight plan
- Modify the weather
- Load a weather file
- Save the current weather

Documentation Support

19:17:08: Initialization complete
19:17:13: Downloading global weather data for 2007-10-28 23:17:13 (23:17:13)
19:17:15: Weather saved to disk
19:17:17: Download complete
19:17:17: Populating weather stream with new data...
19:17:32: Weather stream fully populated with new data
19:17:32: Weather synthesis thread has been started
19:17:45: Synthesis updated...
19:17:46: Weather injection thread has been started
19:17:46: Data output thread has been started
19:17:50: Station data export completed
19:17:50: **** ASX Initial Weather Synthesis Complete! ****

Helpful Links

[ASX Documentation](#)
[HiFi's Home Page](#)

Articles

[Preparing for Hurricane Season](#)



Synthesis Idle

Depiction Output Idle

Download Idle

©2007 HiFi Flightware



LOGICIEL MÉTÉO

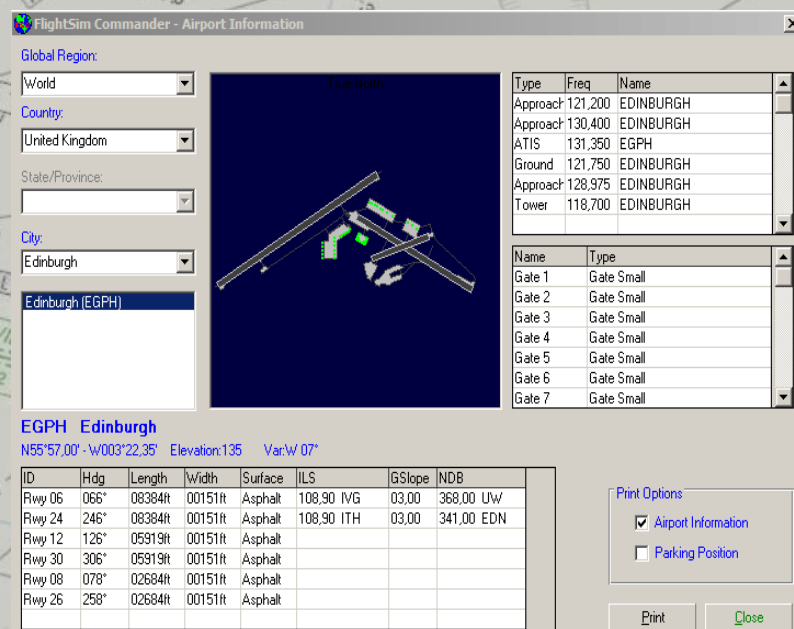
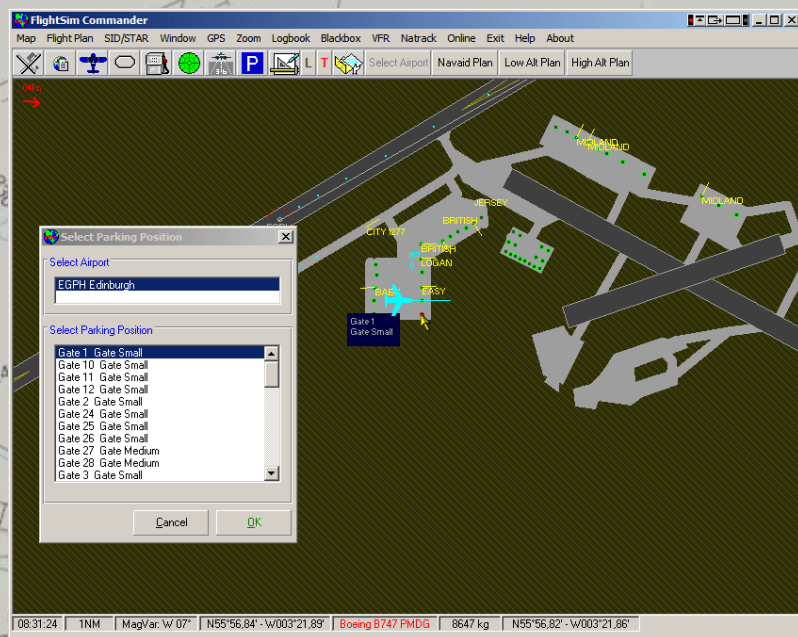


LOGICIEL DE PLANIFICATION DE VOL ET DE NAVIGATION

FlightSim Commander

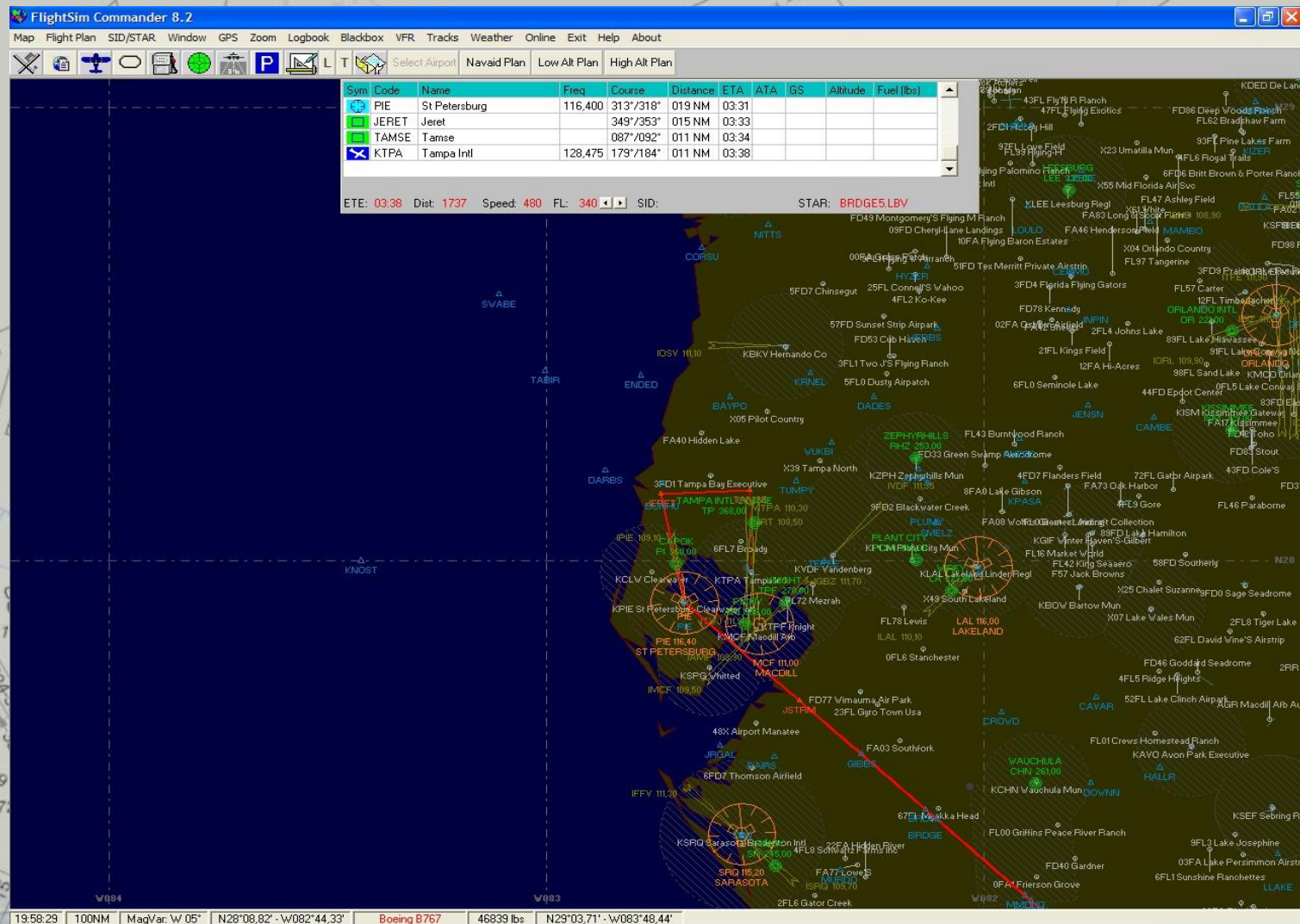


**Flight Planner
Moving Map
Navigation Tool**
for
(c) Microsoft Flight Simulator

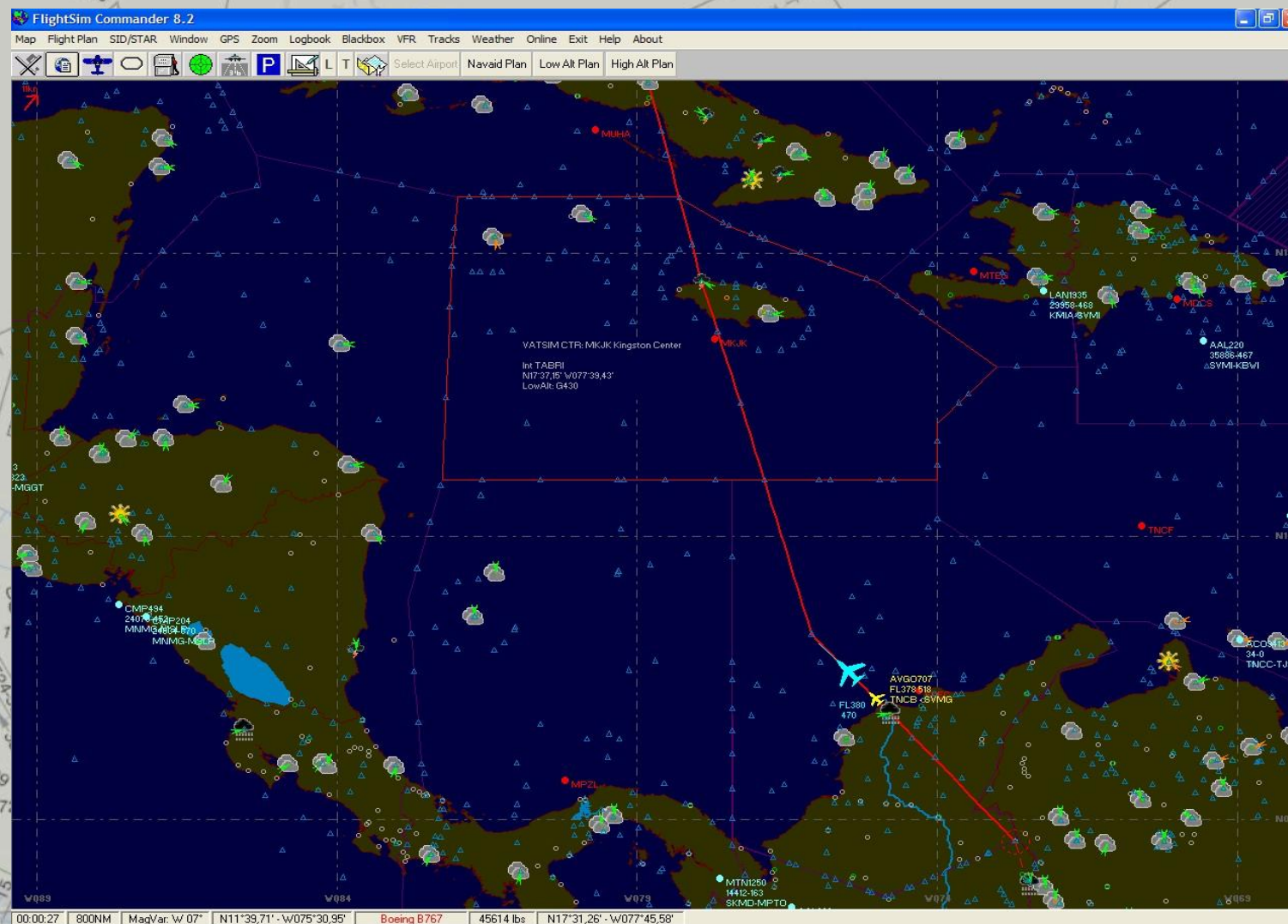




LOGICIEL DE PLANIFICATION DE VOL ET DE NAVIGATION



LOGICIEL DE PLANIFICATION DE VOL ET DE NAVIGATION





LOGICIEL DE PLANIFICATION DE VOL ET DE NAVIGATION

Alt: 38095 AGL: 38095

TAS: 495 GS: 493

Hdg: 352,3° Trk: 356,3°

TT: 349,3° WCA: -03,9

MgVr: -03,0°

N51°24,21' E004°07,03'

<<

>>

AutoHdg

GoTo

Frg

Gen

WP

WX

Arr

ILS



LOGICIEL DE PLANIFICATION DE VOL ET DE NAVIGATION

ULNES

ULNES

Hdg: 291,5°

Brg: 340,0°

ETE: 00:02

Dst: 013,7

Alt: 11202

AGL: 10943

TAS: 338

GS: 324

053° | | | | | 01,4

<<

>>

AutoHdg

GoTo

Frq

Gen

WP

Wx

Arr

Iss



LOGICIEL DE PLANIFICATION DE VOL ET DE NAVIGATION

Surface Weather:

20006KT

CAVOK

08/05 Q1015

Ambient Weather:

27033KT -48

<<

>>

AutoHdg

GoTo

Frq

Gen

WP

WX

Arr

Il3

LOGICIEL DE PLANIFICATION DE VOL ET DE NAVIGATION

EGPH Edinburgh
Edinburgh/United Kingdom
Alt: 00135ft ATIS:131,350
Parking: 44

Dist: 434nm ETE: 00:58

<<

>>

AutoHdg

GoTo

Frq

Gen

WP

WX

Arr

ILS



LOGICIEL DE PLANIFICATION DE VOL ET DE NAVIGATION

FSBUILD
FLIGHT PLANNING
FOR FLIGHT SIMULATION

FSBUILD 2.3.1
File Export To... Build Options Misc Help

DEPARTURE
CYC CYC | CALGARY_INTL 07
CYC CYC | TORONTO/PEARSON_INTL 24L PM
ALT: KDTW BORDN2

FLIGHT PLAN
CYC-HUSAR-J504-VBI-J500-SSM-J531-YMS-CYZZ
Mach 80 Cruise: 39000 8767-300 Level 0 BUILD AUTO GENERATE SR Build Complete

Route

| ID | NAME | DIST | HQ | VIA | ALT | LAT | LON | FREQ | TYPE | SPO | ZT | ACTIME | FF | ZB | ACB0 | FREM | GW | vrx |
|----|---------------------------|------|-----|------|-------|-----------|------------|--------|------|-----|----------|----------|---------|---------|---------|----------|----------|-----|
| 1 | CYCY CALGARY_INTL | 50 | 075 | DCT | 3557 | N51.06.50 | W114.01.13 | | APT | 390 | 00.07.44 | 00.00.00 | 28148.0 | 3628.0 | 6.0 | 45476.1 | 289171.1 | 0 |
| 2 | HUSAR HUSAR | 102 | 078 | J504 | FL230 | N51.04.18 | W112.41.38 | | INT | 424 | 00.14.31 | 00.07.44 | 18783.4 | 4666.8 | 3628.0 | 41848.1 | 285543.1 | 0 |
| 3 | YEA EMPRESS | 193 | 078 | J504 | FL390 | N50.55.35 | W109.59.20 | 115.90 | VOR | 457 | 00.25.26 | 00.22.18 | 9165.8 | 3833.2 | 6294.8 | 37181.3 | 281876.3 | 0 |
| 4 | VUN LUMSDEN | 91 | 080 | J504 | FL390 | N50.40.00 | W104.53.22 | 114.20 | VOR | 457 | 00.12.02 | 00.47.46 | 8912.9 | 1787.5 | 12127.9 | 33348.2 | 277043.2 | 0 |
| 5 | YOR BROADVIEW | 103 | 094 | J504 | FL390 | N50.21.46 | W102.32.24 | 117.50 | VOR | 457 | 00.13.35 | 00.59.48 | 8912.9 | 2017.8 | 13915.4 | 31550.6 | 275255.6 | 0 |
| 6 | YBR BRANDON | 230 | 087 | J504 | FL390 | N49.54.36 | W99.56.44 | 113.80 | VOR | 457 | 00.30.14 | 01.13.24 | 8912.9 | 4491.1 | 15933.2 | 29542.9 | 273237.9 | 0 |
| 7 | VBI SIOUX NARROWS | 195 | 108 | J500 | FL390 | N49.28.36 | W94.02.47 | 115.20 | VOR | 457 | 00.25.41 | 01.43.39 | 8912.9 | 3815.2 | 20424.3 | 25051.8 | 269746.8 | 0 |
| 8 | YDT THUNDER BAY | 236 | 119 | J500 | FL390 | N48.15.13 | W89.26.14 | 114.10 | VOR | 457 | 00.31.02 | 02.09.21 | 8912.9 | 4609.9 | 24239.6 | 21236.5 | 264931.5 | 0 |
| 9 | SSM SAULT STE MARIE | 107 | 131 | J531 | FL390 | N46.24.42 | W84.18.52 | 112.20 | VOR | 457 | 00.14.06 | 02.40.23 | 8672.3 | 2087.2 | 28849.5 | 16626.6 | 260321.6 | 0 |
| 10 | APNEL APNEL | 60 | 136 | J531 | FL390 | N45.21.01 | W82.13.41 | | INT | 438 | 00.08.04 | 02.54.30 | 5510.5 | 786.4 | 30936.7 | 14539.4 | 258234.4 | 0 |
| 11 | YW WARTON | 54 | 138 | J531 | FL290 | N44.44.41 | W81.06.19 | 117.70 | VOR | 365 | 00.09.15 | 03.02.36 | 4200.0 | 650.8 | 31723.0 | 13753.0 | 257448.0 | 0 |
| 12 | YMS MANS | 35 | 150 | DCT | 14000 | N44.08.35 | W80.08.46 | 114.50 | VOR | 245 | 00.08.27 | 03.11.52 | 4750.0 | 1860.1 | 32373.8 | 13102.3 | 256797.3 | 0 |
| 13 | CYZZ TORONTO/PEARSON_INTL | | | | 569 | N43.40.38 | W79.37.50 | | | | | 03.20.20 | | 94233.9 | 11242.2 | 254937.2 | | |
| 14 | | | | | | | | | | | | | | | | | | |
| 15 | Total Distance: 1463 NM | | | | | | | | | | | | | | | | | |

Route NorthAtlanticTracks Navlog Waypoints DEP/APR
N53.06.00 W089.11.10 131





LOGICIEL DE PLANIFICATION DE VOL ET DE NAVIGATION



FSBUILD 2.3.1

File Export To... Build Options Misc Help

DEPARTURE

CYC | CALGARY_INTL | 07

DESTINATION

CYZ | TORONTO/PEARSON_INTL | 24L

ALT: KDTW

BORDN2

FLIGHT PLAN

CYC-HUSAR-J504-YBI-J500-SSM-J531-YMS-CYZ

Mach 80 Cruise: 39000 39000 8767-300 Level 0

BUILD AUTO GENERATE SR Build Complete.

Route

Folder Items

Route FlightPlans OnlineATC Aircraft Options WebSites External_Flight Web_Planners

FSBUILD FLIGHT PLAN

FUT REL IFR AAL327 CYC-07/CYZ-24L MACH 80 A/C B767-300 LEVEL-0

TAXI

FUEL TIME

OCRR

TOGMT

LDGMT

AVG W/C

DEST CYZ

034234

0320

289171

254937

P000

RESV

006324

0045

ELEV. 569

FT

ALTN

000000

0000

ALTN KDTW

DIST 186

HOLD

002108

0015

EXTRA

002811

0020

ZFW 243695

PAYLOAD 046695

TTL AT TO

045476

0439

DIST 1463

REQD

045476

0439

ETD

CLB BIAS 0.04

CRR BIAS 2.44

DSC BIAS 0.04

DEP BIAS 0 MIN 0 DIST 0 FUEL

ARR BIAS 0 MIN 1200 FUEL

CYC-HUSAR-J504-YBI-J500-SSM-J531-YMS-CYZ/0320

TO NM AMY

M/H FL

M/C TAS G/S

ZT

ACTIME

ETA ATA

ACRO ABO REM ARRM

N5104.3/W11241.6

075 CLB

000000

CZEG

HUSAR 050 DCT

075 390 390 00/07 00/07

...

0036/...

0418/...

N5055.5/W10959.3

078 CLB

000000

CZNG

YEA 115.90 102 J504

078 424 424 00/14 00/22

...

0082/...

0371/...

N5040.0/W10453.3

078 390

000000

CZNG

VLN 114.20 194 J504

078 457 457 00/25 00/47

...

0121/...

0333/...

N5021.7/W10232.4

090 390

000000

CZNG

IDR 117.50 092 J504

090 457 457 00/12 00/59

...

0139/...

0315/...

N4954.6/W0956.7

094 390

000000

CZNG

YBR 113.80 104 J504

094 457 457 00/13 01/13

...

0159/...

0295/...

N4928.6/W0902.7

087 390

000000

CZNG

VBI 115.20 230 J504

087 457 457 00/30 01/43

...

0204/...

0250/...

N4815.2/W0926.2

108 390

000000

CZNG

YQT 114.10 196 J500

108 457 457 00/25 02/09

...

0242/...

0212/...

N4624.7/W0418.8

119 390

000000

SSM 112.20 236 J500

119 457 457 00/31 02/40

...

0288/...

0166/...

N4521.0/W0213.6

131 390

000000

CYZ

APNEL 108 J531

131 457 457 00/14 02/54

...

0309/...

0145/...

N4444.6/W0106.3

136 DSC

000000

CYZ

YVV 117.70 060 J531

136 438 438 00/08 03/02

...

0317/...

0137/...

N4408.5/W0808.7

138 DSC

000000

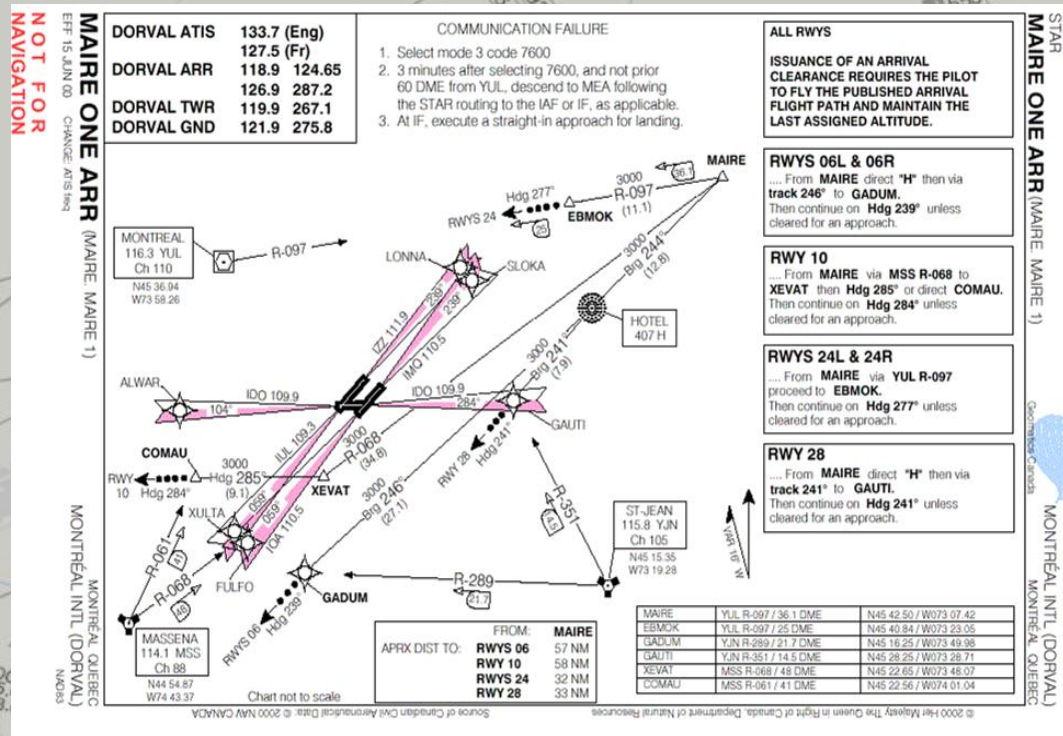
CYZ

Route

Route NorthAtlanticTracks Navlog Waypoints DEP/APR



SITE FIR DE MONTRÉAL ET NAV CANADA





MERCI



ET



BONVOL